



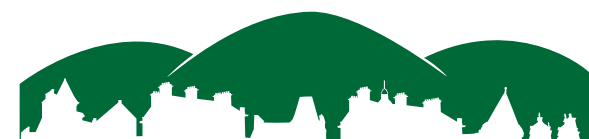
CELEBRATING



10 YEARS



2013–2023



CRIEFFCOMMUNITYTRUST

Annual Report
1 April 2022 – 31 March 2023



OUR VISION

A proud, united community working together to achieve its potential.

OUR MISSION

To work together to bring about improvements in the physical, economic and social environment of Crieff.

To enhance and develop a network of local organisations.

To listen and respond effectively to the needs of the community.

To enrich and contribute to the prosperity of people's lives.

To put the unity back into community.

OUR VALUES

For the Love of Crieff

We love our town and care about its future. All that we do is driven by our desire to make Crieff an even better place for all.

Tenacious and Resilient

We will not give up on our goals just because they are sometimes hard to reach.

We will keep going and we will make sure that the Trust is robust and able to withstand the hard knocks.

Making a Difference

We want our efforts to make an obvious and real difference to the people of Crieff.

Transparency

We will be an open, inclusive and transparent organisation and we will be accountable to the people of Crieff for the work that we do.

Collaborative

We will not work in isolation, but in the spirit of partnership, seeking opportunities to collaborate with individuals and groups for the betterment of Crieff wherever possible.

Registered address: Can Do Crieff, Lodge Street, Crieff PH7 4DW

Registered charity name: Crieff Community Trust. Charity number: SC044348

Company registration number: SC445952

Email: crieffcommunitytrust@gmail.com

www.crieffcommunitytrust.org.uk

CONTENTS

Welcome from the Chair	3
-------------------------------	----------

CEO's Statement	3
------------------------	----------

Organisation

Key Milestones	4
----------------	---

About Crieff Community Trust	5
------------------------------	---

Our People	6
------------	---

Strategic Management for Sustainable Success	8
--	---

Integrated Statement of Strategic Intent	10
--	----

Our Work

Community Development

Community Action Plan 2021– 26	12
--------------------------------	----

Uniting Crieff Forum & Town Team	13
----------------------------------	----

Regeneration

Can Do Crieff	15
---------------	----

Drummond Arms	16
---------------	----

James Square & the Murray Fountain	18
------------------------------------	----

Environment

Turretbank Wood	20
-----------------	----

Linking Lady Mary's Walk	21
--------------------------	----

Crieff to Comrie Core Path	22
----------------------------	----

Volunteer Path Group	23
----------------------	----

Financials & Funding

Financial Review	24
------------------	----

Consolidated Accounts	25
-----------------------	----

Looking Ahead	26
----------------------	-----------

How to get involved	27
----------------------------	-----------

This annual report was cowritten by the CCT Trustees.
Design by Ailsa Campbell.



WELCOME FROM THE CHAIR

It's hard to believe ten years have passed since the Crieff Community Trust steering group changed into a fully fledged board while also launching Crieff's first Community Action Plan (2013 – 2018). I remember how we were a small group who hadn't worked together before, learning how to set up a board while also setting up the action groups to work on the Action Plan's priorities – it was a steep learning curve!

Since those early days, CCT trustees have continued to 'build the plane while flying it', strengthening our organisation's governance while also working on a number of different projects from tackling the formidable Drummond Arms, to developing local paths, creating a revenue source with a co-working space 'Can Do Crieff', and encouraging cooperation and collaboration between all of Crieff's groups.

This past year we took a significant step with our first Strategy document in which a key priority was to acquire a CEO. We were delighted to announce the appointment of David McCann as CEO in December. David will be well known to many in the town as the highly creative and resourceful Crieff BID manager from 2018 to 2021. Prior to this, David had a long history working with community organisations and development trusts across Scotland.

Now, with a strategy, more professional skills and ten years experience under our belt, we look forward to taking CCT to the next level.

Ailsa Campbell

Chair
Crieff Community Trust

This year Crieff Community Trust celebrates its 10th year of working tirelessly to make Crieff an even better place to live, to work and to visit. The Trust, and those community volunteers who have led it, have been on a journey that began with activism and aspiration and grew to strategy and delivery.

Now we look to the future and the next stage of this journey where, building on the foundations of collaboration and partnership, the Trust will work with its partners in the community to deliver a robust strategy which will realise a shared vision for the town, as outlined in the Community Action Plan, and one which is designed for success and improvement to the economic, physical and social environment of Crieff. We do this whilst ensuring sustainability for the Trust and growing the resources to continue to deliver on those aspirations first voiced ten years ago.

I look forward to being on this part of the journey and to the many achievements that are surely yet to come for Crieff Community Trust and, more importantly, for the town and community of Crieff.

David McCann

CEO
Crieff Community Trust

CEO'S STATEMENT

KEY MILESTONES

Over the years, CCT has developed a diverse portfolio of projects which all stem from continuous consultation with our community. The timeline below highlights key milestones. However, it does not convey all the meetings, emails, funding applications (unsuccessful as well as successful) which happen behind the scenes by dedicated individuals volunteering their time, energy and professional skills to make things happen.



ABOUT CRIEFF COMMUNITY TRUST



Crieff Community Trust was established in March 2013 as a Scottish Charity (SC044348) and Company Limited by Guarantee (SC445952). It was born out of the actions of a small group of local people, who in early 2011 wanted to 'do something' about the decline of Crieff's town centre. That led to consulting the community about whether they wanted a development trust for Crieff and then identifying their priorities in Crieff's first **Community Action Plan (2013–18)**. Since then, the Trust has worked hard to deliver a diverse range of projects from the Action Plan, from finding solutions to derelict buildings and empty spaces in the town centre, to improving the local path network and linking with the national cycle routes. In addition to delivering its own projects, Crieff Community Trust has established itself as the **key anchor organisation** for Crieff.

In 2014, CCT was successful in its **Community Right to Buy** application of the abandoned and derelict **Drummond Arms Hotel**. **In 2015**, CCT **upgraded the beginning of Lady Mary's Walk** in what was then called 'Acorn Dell'. The following year, CCT acquired the woodland and the community voted to rename the land '**Turretbank Wood**'. CCT now manages the woodland on behalf of Crieff. **In 2018/19**, funded by the Scottish Government's Community Choices Fund, **CCT distributed £42,000 to 19 groups** via the participatory budgeting process, '**Cash for Crieff**'. The successful grantees completed

their wide ranging projects in March 2020 benefiting people from all walks of life through various existing groups in the community. **An impact evaluation of the social capital** of the process showed groups were better connected, felt more informed about what else was going on in the community and their voice was heard as a result of the 'Cash for Crieff' event delivered by CCT. **In 2019**, CCT opened co-working space '**Can Do Crieff**' with the aims of providing an affordable, professional shared workspace for locals and visitors and increasing footfall in the town. The same year, CCT set up a trading subsidiary '**Drummond Arms Regeneration Limited**' to take title of the **Drummond Arms** in order to regenerate the site and stop the decline of the town centre.

During the Covid pandemic, the Trust led the renewal of the **Community Action Plan (2021–26)** and established the **Uniting Crieff** framework enabling Crieff's community groups to network, find ways to support each other and collaborate on projects. **In 2022**, the Trust took the lead to fund the restoration of the historically significant **Murray Fountain** in the centre of Crieff and bring it back to its former glory with light and water. As of now, the multi-partnership working group have raised over 80% of the required funding and are on course to fully restore the monument by the end of 2024.

OUR PEOPLE

The team behind Crieff Community Trust brings a wide range of backgrounds, knowledge and experience to the table, coming together over their shared desire to help improve Crieff. We are a friendly group



Ailsa Campbell, Chair

After growing up in Vancouver, Canada, Ailsa returned to her Scottish roots in 2000 to work in Scotland's design industry on a wide range of projects from packaging to international exhibitions before running her own design company working with Strathearn's small businesses. Ailsa is also co-owner of one of Scotland's oldest bakeries based in Crieff. She is one of the founders of CCT as well as the Crieff BID and was a BID board member for its full term. Ailsa is currently consolidating

her business and community development experience by studying for an MBA at the University of Strathclyde, graduating in November 2023.



Brian McVey, Vice Chair

Brian worked in economic development for over 30 years, in a number of senior roles in Scottish Enterprise, including Director of Business Development and Director of Strategy. He worked in a number of important policy areas, including entrepreneurship, innovation, growth finance and family business. His management experience included business planning and budgeting, research and evaluation, and EU funding. He played a lead role in setting up the Business

Gateway, Scotland House Brussels and Co-operative Development Scotland. Brian is from Glasgow and now lives in Comrie, after retiring from Scottish Enterprise in 2019.



Jane White, Secretary & Treasurer

Jane has an MA in Modern and Medieval Languages (French and German) from Cambridge University. She worked for 15 years in marketing and market research, including a few years as Innovations Manager at Dulux, ICI Paints. Retraining as a Modern Languages teacher after moving to Crieff over 20 years ago, she taught French and German at Morrison's Academy in Crieff for 10 years. In previous years she has volunteered with Crieff Guides and the Crieff Community

Garden. Jane brings strong planning, communication and organisational skills, together with a genuine desire to improve aspects of daily life in Crieff.



James Anderson, Paths

A retired civil engineer, Jim's career took him to work in various countries around the world. In the 1970s and early 1980s he worked on the construction of major ports in Saudi Arabia and Dubai. He and the family moved to Crieff in 1978 and since then he has found Crieff a suitable base for commuting to work anywhere: Glasgow on the development of Wave Power renewable energy; London on the M25; and since the mid 1980s overseeing contracts throughout

Scotland and internationally whilst working for an international contractor.



Ann Ross, Membership

Ann has a Masters degree in Education and, though originally a PE teacher, retrained as an Additional Needs teacher specialising in behaviour difficulties working between Crieff and Auchterarder until she retired. She was a governor of Morrison's Academy for eight years, is secretary of the local branch of RNLI and an elder of the Parish Church.



Claire Sanville, Finance

Claire and her family moved to Crieff from London 13 years ago after having been blown away by the glories of the Perthshire countryside and the friendliness of the Crieff locals. Before then, she spent many years in the financial districts of London and Paris working in IT as a Financial Systems Analyst.

and welcome anyone looking to get involved in any capacity. We are particularly seeking team players with strengths in the areas of strategy, finance, marketing and project management.



Ian Christie, DARL & HR

A retired civil engineer, Ian managed one of the country's argest rock drilling and blasting divisions. He was responsible for overseeing the blasting of 40 million tonnes of rock per year in the UK and overseas. Ian continues to work with them as a consultant advising on operational and Health and Safety requirements. He moved to Crieff 36 years ago primarily due to its central location, and ease of access to all parts of the UK. Ian is married to Karen, who owns the Fun

Junction toy shops in Crieff and Perth.



Lucile Black, DARL

Lucile is a Chartered Surveyor with 30 years of public and private sector experience. Prior to retirement she was Principal Property Adviser to the Scottish Government contributing to the Community Empowerment legislation. She is a member of Muthill Village Trust and Chair of Strathearn and Strathallan Local Action Partnership which brings services and the community together to tackle local issues and inequalities.



David McCann, CEO

David has been involved in the third sector for over 30 years. He was founder and CEO of one of the largest participatory arts organisations in the UK managing projects throughout Scotland, including the acquisition and repurposing of historic buildings. He has chaired and been director of numerous charities and was a consultant on Paisley's bid for 2021 Year of Culture. He was manager of Crieff's BID from 2018 – 21. He also provides consultative

support to Crieff Connexions. In 2016 he was awarded a fellowship from UWS for his contribution to Community and Arts Development.



Sandra Rankine, Property Law Support

Sandra qualified as a solicitor in 1987 from the University of Strathclyde. She has been in continuous practice, worked at a number of Scottish and English law firms and is dual qualified from 2001. Sandra has a broad commercial property background and currently focuses on leases for occupiers including retail, office, hotels and leisure occupiers and property investment, particularly for foreign investors. Sandra is dual qualified and entitled to practise in Scotland as well as England and Wales.



Stephen Oswald, DARL Development Coordinator

Stephen has more than 30 years' experience in the property sector. Retained by Drummond Arms Regeneration Limited (DARL) since Sept 2020 as Project Development Coordinator. He is also involved as Project Lead for Capability Scotland's "Our Inclusive Community Project" in Perth, a trustee of the charity Edinburgh Palette and a member of Scottish Water's Independent Customer Panel.



Kona McPhee, Web Support

Kona designs, builds and manages websites, and develops bespoke web-related software. She provides recording, editorial and production services for a wide variety of digital media, and also writes and produces original music.

Strategic Management For Sustainable Success

We continue to develop our strategy for the future sustainability and resilience of the organisation and its ability to carry out its work beyond the current board of trustees. Figures 1 and 2 below show the results of an exercise undertaken in November 2022 to develop CCT's strategy. This demonstrates how we are building our capabilities and capacity as a Development Trust by strengthening our governance, our board structure, and management resources engaged in our key projects.

An important development in the last year was the appointment of a CEO, David McCann, to lead our operational management. To support David, we have created a Leadership Team, drawn from our Board. As well as improving our day-to-day operational management, this allows us to make an increased effort to improve coordination with local partners – particularly around key capital projects.

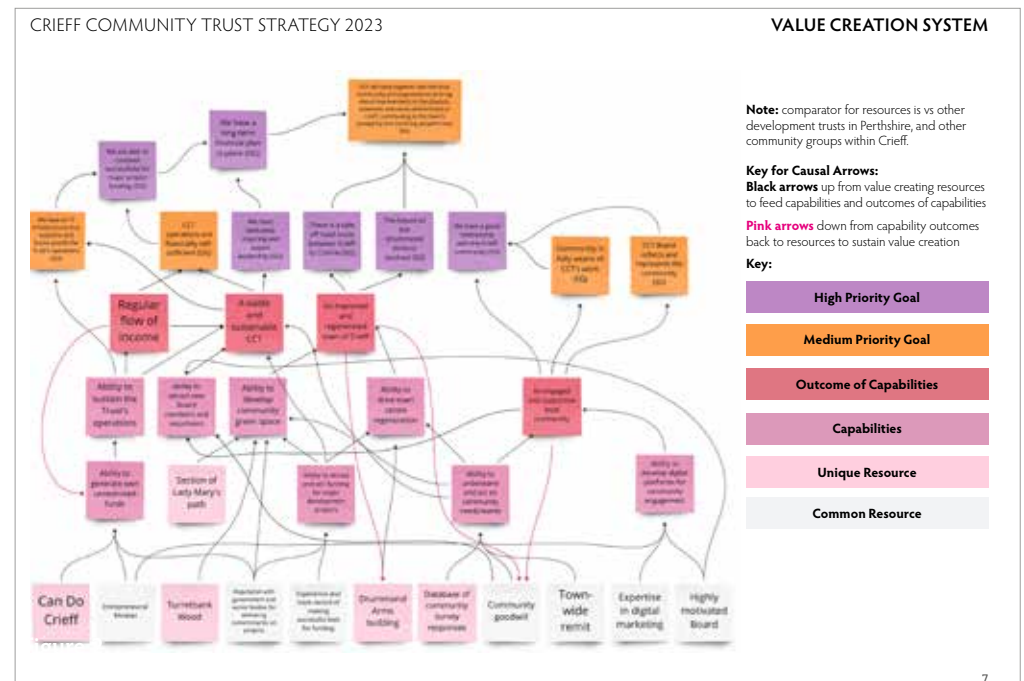
This improved operational structure will support the successful implementation of the major projects in our current portfolio. Over the coming year, we will seek to take these

major projects further forward, including a significant new funding campaign for the former Drummond Arms site.

The success of these initiatives will make a significant contribution to Crieff's future development. This will help us to respond, as a place and a community, to the challenges we face in the future. This includes major changes in recent years in patterns of work, recreation and lifestyle.

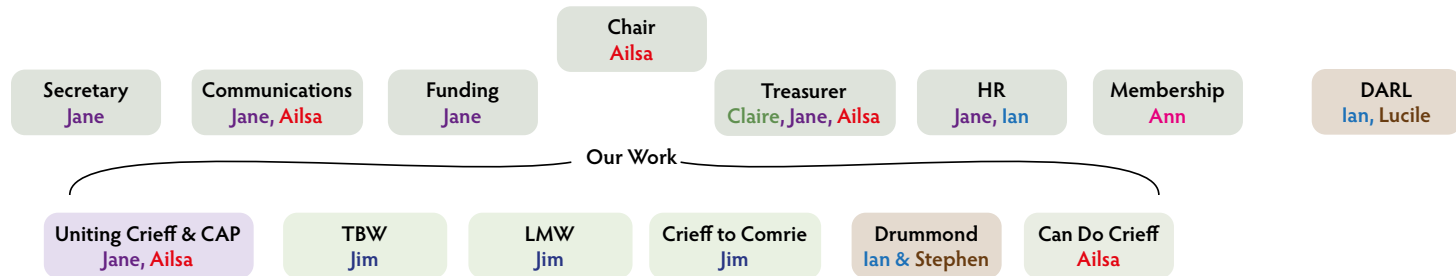
To build on this, we will continue to work closely with local partners – and with our local community – to find innovative ways for Crieff to fully utilise its physical assets and attributes, making our town an even better place to live, work and visit.

This includes exploring how our town can make more of Crieff's advantages in environment and heritage, and how we can respond effectively to the major challenges associated with climate change.



Figures 1 & 2: Goal System Mapping and Value Creation System from CCT's Strategy 2023
 (Credit: Campbell, A., Cunningham, K., Gazzard, J., McPhee, A. (November 2022) *Making Strategy*, University of Strathclyde, MBA Unit)

BOARD STRUCTURE 2022



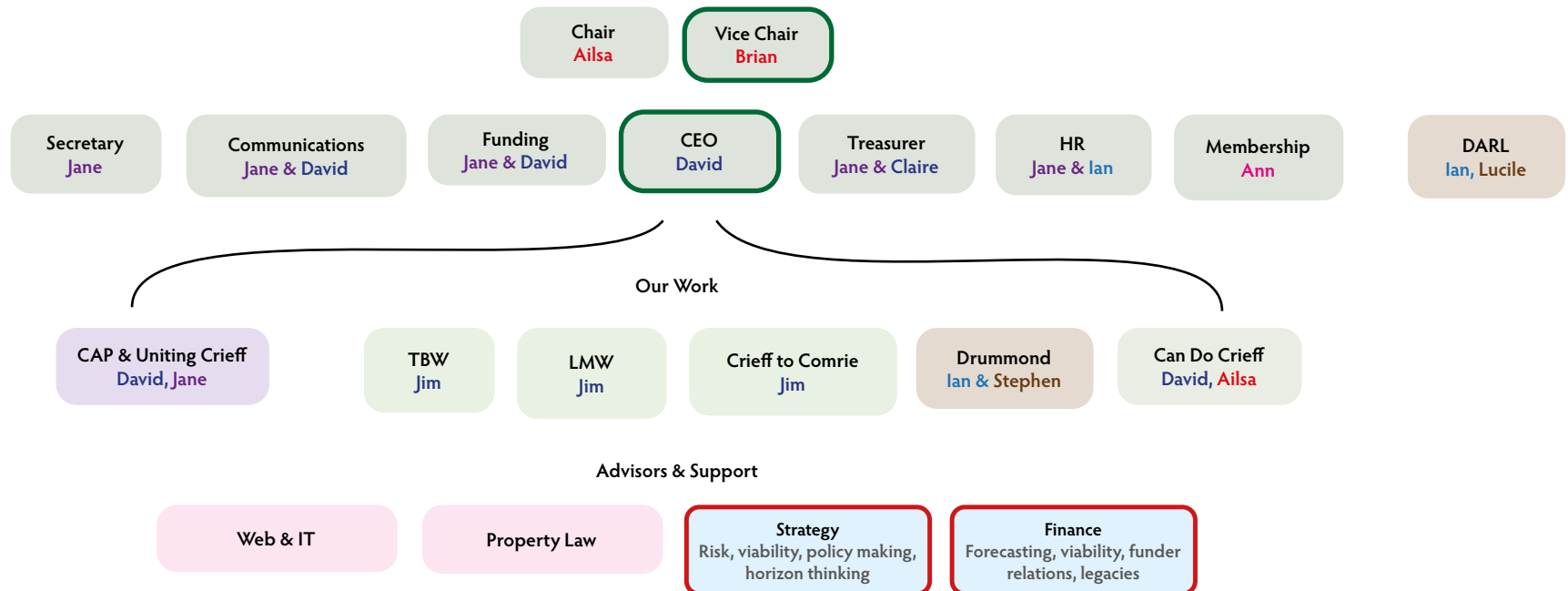
CCT is transitioning from an executive board with trustees running the charity while also leading and managing its projects, to a more professional, sustainable organisation by adding new roles such as a Vice Chair and CEO (outlined in green).

Advisors & Support



The board is very fortunate to have the support of experts in web, IT and property law. We are currently seeking support in the areas of strategy and finance, (outlined in red).

BOARD STRUCTURE 2023



Integrated Statement of Strategic Intent

STRENGTHENING

UNITING

REGENERATING

LINKING

COLLABORATING

CARING

Our ultimate aim is to **work together with the local community and civic organisations to bring about improvements to the physical, economic and social environment of Crieff**, contributing to the town's prosperity and enriching people's lives.

We will achieve this by **recruiting a dedicated Chief Executive**, who will bring expertise enabling us to compete even more successfully for major project funding and **develop a long-term financial plan ensuring our sustainability**. We will also continue to **build awareness and strong relationships across the whole Crieff community** and, more specifically, **complete a safe and accessible off-road path to Comrie** while **resolving the future of the derelict Drummond Arms** site in the town centre.

Our long-term aims will be delivered through **our deep understanding of Crieff and the community's needs**, underpinned by our exceptional capabilities in attracting both project and unrestricted funding and our unique focus on infrastructure and the built environment within the town. Additionally, our **strength in creating engaging digital offerings** will further strengthen our community links. These distinctive capabilities are supported by a portfolio of resources making us ideally placed to deliver our objectives. These start with a **comprehensive database of community survey responses** and include our **Can Do Crieff co-working space** and **ownership of the Drummond Arms building**, as well as land at **Turretbank Wood** and **Lady Mary's Walk**, where sections of the **Crieff to Comrie path** will be built. Our **hard-won reputation for successful project delivery** will also lend great strength to future funding applications.

In realising our aims **we will engage even more actively with the community, bringing a range of groups together to form a Vision for Crieff**, while holding more **regular fundraising and promotional events**. By raising awareness, we will **recruit new board members, complementing the skill set of the existing team**, while **increasing donations and legacies**, and **growing utilisation of and revenue from Can Do Crieff**.

We will **collaborate with other community groups**, as well as **community trust associations, Development Trust Association of Scotland (DTAS), and supportive figures within Perth and Kinross Council and the Scottish Government**. Furthermore, we will **continue to work with local landowners towards delivery of the Comrie path**. We will also look to further **engage local businesses and schools** while building more **collaborative relationships with Historic Environment Scotland and the Council's planning and building control teams**.

This spread are pages from the CCT Strategy 2023, November 2022

(Credit: Campbell, A., Cunningham, K., Gazzard, J., McPhee, A. (November 2022) *Making Strategy*, University of Strathclyde, MBA Unit)



CRIEFFCOMMUNITYTRUST

OUR PURPOSE IS TO BRING ABOUT IMPROVEMENTS TO THE PHYSICAL, ECONOMIC & SOCIAL ENVIRONMENT OF CRIEFF BY:



STRENGTHENING

the organisation with expertise and long-term financial planning



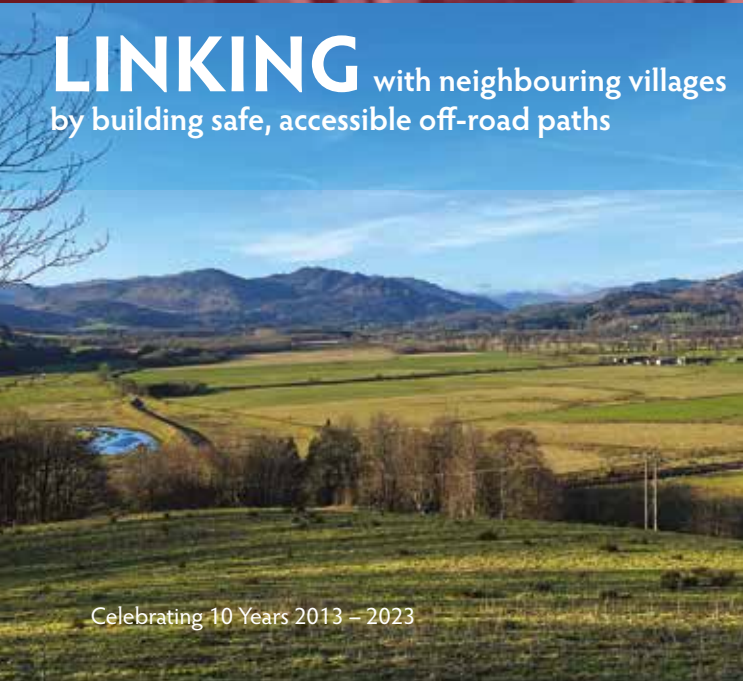
UNITING

Crieff's groups through a shared vision and strategy for our community



REGENERATING

the Drummond Arms to reinvigorate Crieff's town centre



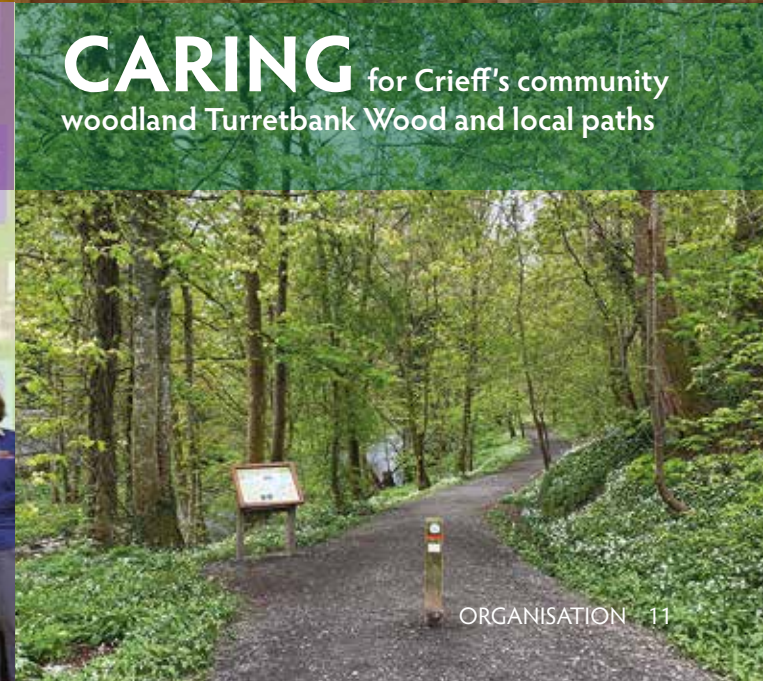
LINKING

with neighbouring villages by building safe, accessible off-road paths



COLLABORATING

with other groups on joint strategic projects



CARING

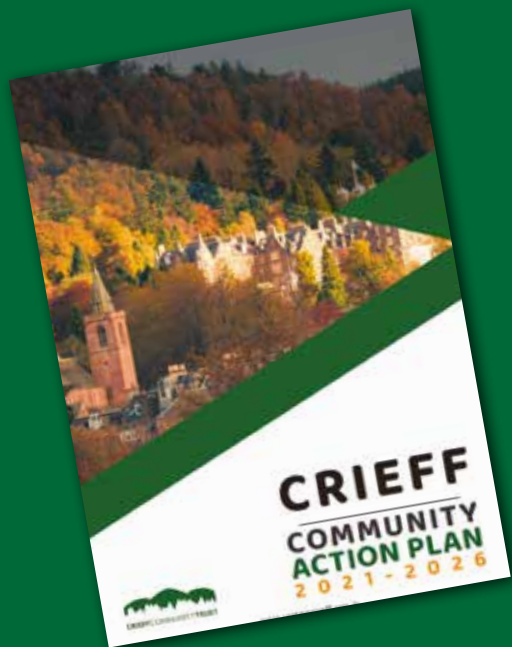
for Crieff's community woodland Turretbank Wood and local paths

COMMUNITY DEVELOPMENT

Crieff Community Action Plan 2021–26

Crieff's Community Action Plan is an important document co-created by the community. A joint 'to-do' list, it sets out the priorities voted by the community for the five year period. Responsibility for delivering the Plan's priorities is shared by a number of Crieff's groups.

The current Crieff Community Action Plan (CAP) is a renewal of the 2013-2018 plan and work continues towards achieving those identified priorities and actions that are still relevant today. The updated plan also embraces new priorities and actions as identified by the community for development during the exhaustive consultation process that took place between November 2020 and March 2021.



The current Action Plan can be read and downloaded from the Uniting Crieff website [unitingcrieff.org.uk](https://www.unitingcrieff.org.uk)

The coordination of the current CAP was facilitated and led by a Steering Group comprised of representatives from Crieff Community Trust, Crieff Community Council, Crieff Connexions, Crieff Community Garden, Logos Youth Project, Creative Crieff, Strathearn Arts, Crieff Succeeds, Remake Scotland, Crieff & Strathearn Museum, Live Active Leisure, local Councillors and Perth & Kinross Council.

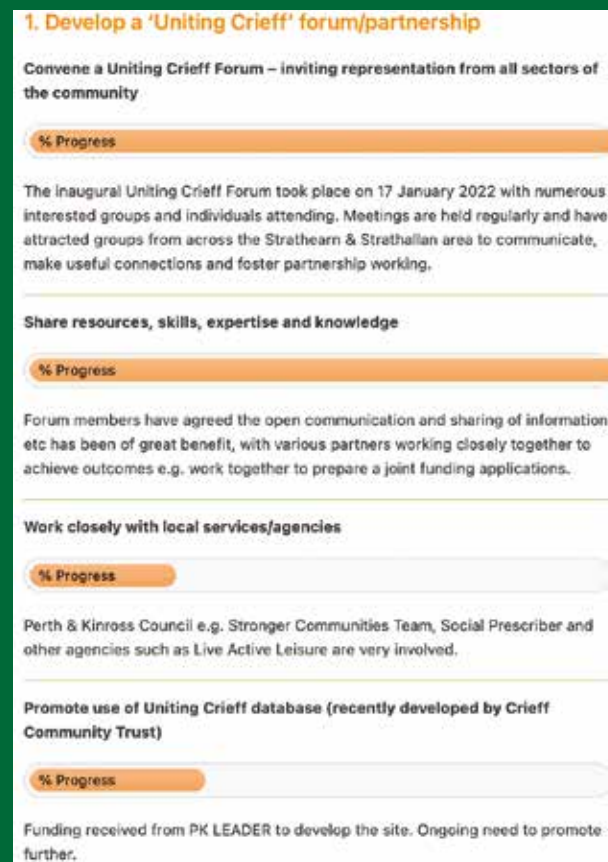
Priorities in this Action Plan are being worked on by local community groups working together with a range of public, private and voluntary sector partners. There remains a need to grow our community's capacity of volunteers and resources to deliver some of the important projects in this Action Plan.

Progress to date

Progress of each priority is shown on the Uniting Crieff website <https://www.unitingcrieff.org.uk/crieff-cap-2021-2026/>

Half way through the timeframe, some projects are complete and others have yet to leave the ground. Reasons why some projects have not progressed can be down to a number of reasons such as:

- a lack of volunteers
- competition for funding
- priorities not aligning with funding criteria



An example of a progress report on priorities from Theme 1 Community: working together and tackling inequalities on the Uniting Crieff website.



COMMUNITY DEVELOPMENT

Uniting Crieff and the Town Team

Uniting Crieff is a framework formed by CCT to strengthen Crieff's social capital by bringing together local organisations to collaborate on projects and actions, including joint funding applications. The Town Team is developing a stronger, shared vision for Crieff.

Uniting Crieff was created to address a strong demand expressed in the Action Plan to see all the many Crieff community groups working together.

Uniting Crieff Website

The website unitingcrieff.org.uk is home to useful information. It enables community groups to connect, share resources, skills, expertise, knowledge and work together through:

- a **Community Database** of local groups, service providers, voluntary organisations and social enterprises
- a **Community Calendar** listing events in Strathearn
- a **Community Facilities Listing Page** listing Crieff's facilities which are available to hire
- the **Crieff Community Action Plan 2021–26** document and its progress



Celebrating 10 Years 2013 – 2023

The Crieff Town Team

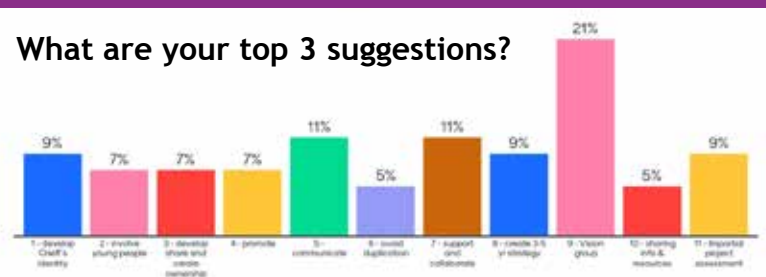
Crieff has a number of large important projects being taken forward by different groups. The Scottish Government Regeneration Unit and Perth & Kinross Council requested that Crieff groups clarify their vision for our town. As a result, CCT invited Crieff group representatives to take part in a workshop led by Dr Dave Mackay, Professor of Strategy & Digital Transformation at the University of Strathclyde Business School in March 2023, where participants were asked to respond collectively to the question:

'To the utmost benefit of Crieff, how can we collaborate effectively on capital projects in the next 3 – 5 years?'

The focus was on how to collaborate effectively, not which projects to do. The outcome was an agreement to form a 'Vision Group' now referred to as the Crieff Town Team. The Town Team are now working to operationalise a strategy to deliver the vision for Crieff with an independent facilitator to support the meetings.



What are your top 3 suggestions?



Crieff's groups agree to form a 'Vision Group' now referred to as the Crieff Town Team

REGENERATION

Can Do Crieff

Now in its fourth year, Crieff's coworking space has established itself as an important resource for locals and visitors looking for an affordable, shared place to carry out their work.

Can Do Crieff was opened by CCT in February 2019 in the old Perth College premises beneath Strathearn Arts. The aim of the project is to help support our High Street by bringing people back into the town and increasing footfall. The coworking space also supports another community-led organisation through monthly rent. Can Do Crieff is also a key part of CCT's strategy to strengthen the organisation for its future sustainable success.

Can Do Crieff provides self-employed and remote workers with an innovative shared coworking space with superfast broadband and meeting facilities available at competitive prices.

Membership

During the past year, Can Do Crieff's membership returned to pre-Covid levels as people adjusted to the new hybrid working model. Crieff was lucky to already have a co-working space up and running to serve individuals and companies and benefiting the local Crieff economy. People find the light touch admin to their liking and feel the price plan is flexible and fair.

The management team continues to focus on growing the number of members to generate additional income for CCT.

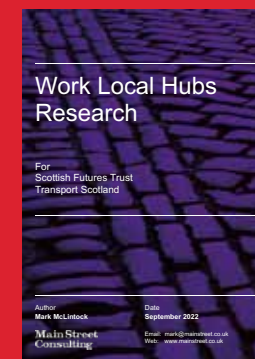


Benefits of Can Do Crieff

- Reduces commuting time and impact on the environment
- Allows for a better work life balance
- Provides a place for people to work around others, reducing isolation
- Keeps spend local, aiding the town centre economy
- Supports another community-led organisation
- Supports a wide range of policies including the Scottish Government's aims for Infrastructure Investment, Net Zero and '15-minute Neighbourhoods'

Can Do Crieff offers

- Flexible, affordable packages from 24/7 access to 'a desk for a day'
- A central town location in Lodge Street, close to schools, shops and amenities
- Superfast broadband, kitchen, desks and meeting space
- The opportunity to meet other people for personal and professional links



Can Do Crieff as a Case Study

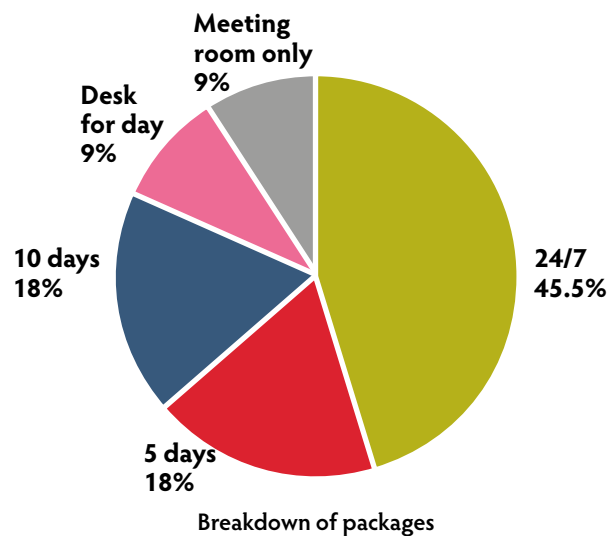
Can Do Crieff was a case study in a research project commissioned by Scottish Futures Trust and Transport Scotland to assess the market for, and viability of, different types of 'Work Local Hubs'.



Can Do Grief is bringing a diverse range of businesses into Grief



Can Do Grief has 14 desks and a meeting room



Breakdown of packages



Can Do Grief Sales for 2022 – 23



Can Do Grief generates £900 monthly rent to Strathearn Arts. Any funds after that are for CCT to cover core costs or put towards other projects

REGENERATION

Drummond Arms

A top priority for the community is to regenerate this prominent derelict building, to revitalise an important part of Crieff's town centre, to create jobs and build the local economy.



A Mandate from the Community

The Drummond Arms Hotel was once a well-loved building in which the community celebrated major events in their lives. Through a series of neglectful owners, it was abandoned and left to deteriorate for over ten years becoming a dangerous eyesore in Crieff's town centre. Regeneration of the building has been identified as the top priority of the town through numerous consultations:

- the Crieff CAP 2013–18
- a Community Right to Buy petition in 2014
- an Empty Buildings Feasibility Study 2017–18
- the Crieff CAP 2021–26

Community Takes Ownership

In October 2019, CCT purchased the former hotel, a Category B listed building, through a special purpose vehicle – a trading subsidiary called Drummond Arms Regeneration Limited (DARL). Then in 2021, with further support from Perth & Kinross Council and additional grants, DARL secured ownership of the Royal Bank of Scotland premises on the ground floor. Joint ownership will greatly facilitate development of the project and is also more attractive to funders.

"What are you going to do with the building?"

The current focus is on restoring the safety and physical integrity of the building, creating the conditions for a viable future that can help restore its contribution to Crieff's prosperity and attractiveness. The plan is to progress the building to a neutral cost state – removing the negative conservation deficit valued at approximately £3 million so that partners may be approached.

Work between 1 April 2022 and 31 March 2023:

- clearing out asbestos and internal materials
- installation of temporary steel beams for internal bracing
- internal scaffolding to roof level, to enable further asbestos removal and a first examination of the condition of the roof which has suffered from years of neglect

Project Development Officer

A crucial component in the regeneration of the Drummond Arms is the engagement of a dedicated Project Development Officer. This position was supported by the Scottish Government's Investing in Communities Fund since October 2019. He is employed 3 ½ days a week to end March 2023 to work on this project.



Site inspection with representatives from Perth & Kinross Council March 2023.

Funding

DARL was awarded £110,000 from the Scottish Government's Community Led Local Development Fund (CLLD) with the support of Perth & Kinross Council in March to be spent on external scaffolding, which will permit a closer inspection of the roof and help to further protect the public.





The Drummond Arms taking part in Crieff's Christmas Lights display

A generator was installed inside the building to provide limited lighting for the external artwork in the windows over weekends during the festive period.

REGENERATION

Refurbishment of the Murray Fountain & James Square

Crieff Community Trust is leading a multi-agency partnership working towards the refurbishment of James Square and the restoration of the historic Murray Fountain at the heart of Crieff's town centre.

James Square is the central point in the town of Crieff. It is the place where members of the community gather to meet, have markets, events and celebrations. It is also the place where the many visitors to the town head to assess their place and bearings. At the heart of the Square sits the historic Murray Fountain, a focal point for all who come there. The project will see the full restoration of the fountain to its former glory with lighting and spouting water providing a monumental beauty in the heart of the town and a sense of community pride.

History

The Murray Fountain was constructed by William Mossman and installed in 1894, in recognition of the Crieff Water Works, the town's fresh water supply, and other benefits provided by the Murrays of Ochertyre. The current square was developed in the 1990s and continues to be a central focal point for town life.

The structure is currently a category 'B' listed monument, decommissioned as a drinking fountain in 1993 alongside wider restoration works to James Square. The fountain is in need of repair to its stoneworks, electrical, undercroft and for the reintroduction of non-drinking water. There

are varying options for restoration works, with full restoration, including lighting and the reintroduction of water, being currently budgeted at over £100,000. The Trust has taken the responsibility of funding applications and holding funds. £85,000 has already been secured in funding and the Trust has funding applications for the shortfall currently submitted.

CCT has been working with Perth & Kinross Council, Crieff in Leaf, Greenspace Rangers, Crieff Lights at Christmas and other local groups to refurbish the Murray Fountain and James Square to improve the quality of the surroundings.

The refurbishment will include:

- cleaning and relaying paving stones around the fountain
- cleaning and repairing the stonework and paintwork of the fountain
- upgrading the lighting and associated rewiring
- general refurbishment works to infrastructure and planting within the square
- reinstating non-drinking water to the fountain

Local organisations who form the partnership working group along with Crieff Community Trust include Crieff Museum Group, Crieff in Leaf, Crieff Community Council, Crieff at Christmas, the Greenspace Ranger and Perth & Kinross Council.



Celebrating 10 Years 2013 – 2023



'The Wee Shop'

Having acquired the former Royal Bank of Scotland building on the ground floor of the Drummond Arms, it was decided to improve the appearance of the former bank manager's office on the High Street. Thanks to grant funding from CLLD, the Arnold Clark foundation and PKC's Open For Business Award, new windows were installed and painted. Local artist, David Campbell, carefully sourced old photos to recreate how the building would have looked when it was a shop. It is now a useful space for promoting the work of CCT and other Crieff community groups as well as events in the town.



The restoration of this wonderful monument in the very heart of our town is hugely significant. We are grateful for the support from all the funding bodies and for the work done on our behalf by our three Ward Councillors.

The group is grateful to Scotland Loves Local and SGN who granted funds in 2022–23 towards the Fountain's refurbishment.



ENVIRONMENT

Turretbank Wood

The Trust continued its care of Crieff's beloved community greenspace with essential tree maintenance and ongoing clearing of Himalayan Balsam. We were delighted that Crieff in Leaf planted a third Royal Oak in Turretbank Wood.

Tree Maintenance

As a result of the severe storms in November 2021, CCT commissioned a tree survey to identify trees requiring attention. After a tender process, the PKC Community Led Local Development (CLLD) fund paid for a survey in May 2022. On receipt of the survey report CCT issued a further tender invitation in June to establish the cost of carrying out the recommendations.

Further funding was secured from PKC CLLD in November to deal with 32 trees identified in the survey. TD Trees and

Land Services Ltd were awarded the contract to carry out the maintenance. In addition, PKC CLLD supplied further funds to fell some Ash trees suffering from Ash Die Back. The pocket of Ash trees at the far end of Lady Mary's Walk became somewhat complicated as different boundary lines became apparent. It was agreed that the logs produced from the felling of the trees would be sold locally and 50% of the money raised would be donated to Crieff Connexions and the balance of £250 retained by CCT to help fund CCT's charitable objectives.



Logs produced from the felling of the Ash trees were sold locally. The money raised was split between Crieff Connexions and Crieff Community Trust.



Balsam Blitz Success

It was encouraging to note that the crop of Himalayan Balsam present in the summer of 2022 in Meadows 1 and 2 was again further reduced. This was our 6th year tackling this invasive plant and the volume and diversity of local plant species now flourishing in Turretbank Wood shows the importance of this campaign. Our thanks go to those who volunteered, for their support and assistance again this year.



ENVIRONMENT

Linking Lady Mary's Walk

The Trust continued its work to find a way of linking Lady Mary's Walk from the start in Turretbank Wood with the remainder of the main walk along the River Earn.

Over the years, the waters of the Turret Burn and the River Earn have eroded parts of Lady Mary's Walk and caused the collapse of the river bank. This, together with frequent flooding of the river, has made it impossible for less able people to join the walk from Turretbank Wood.

Route Exploration

The Trust continued to explore the optimum way to link Turretbank Wood with the rest of Lady Mary's Walk avoiding the current difficulties posed by frequent flooding and restricted access due to large boulders and steep slopes on the existing route along the banks of the Turret Burn and the River Earn. Survey work carried out this year has confirmed potential routes that could provide significantly improved access. The Trust is now working to finalise the best solution to develop.

Acquiring the Disused Railway Line

Meadows 1 and 2 in Turretbank Wood are separated by the disused Crieff to Comrie railway line. During the year CCT continued working to finalise the transfer of ownership of the disused railway embankment at the Turret Burn and the cutting through to the wooden bridge.



Funding Success

Concurrently CCT applied to Paths for All, the administrators of the Ian Findlay Path Fund (IFPF), for funding to carry out a project for the design of an active travel path linking the community at Oakbank with MacRosty Park via Turretbank Wood. In March 2023 Paths for All awarded CCT a grant from IFPF for this design project. The design phase has now been awarded and work on the initial design and planning process will begin in summer 2023.

ENVIRONMENT

Crieff to Comrie Core Path

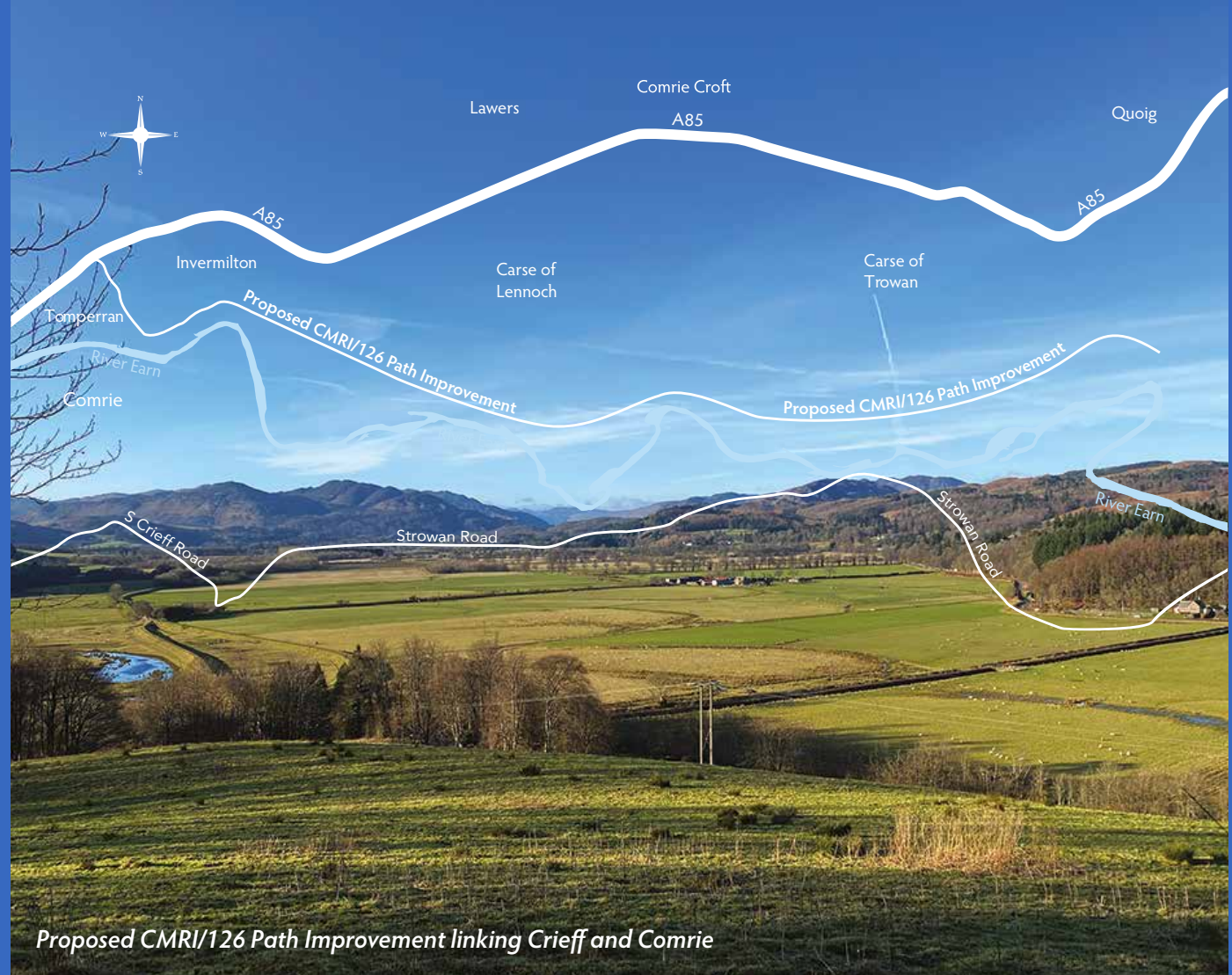
For many years the communities of Crieff and Comrie have wanted a safe, off-road cycle and walking route linking the two communities, utilising the adopted Core Path CMRI/126 along the route of the dismantled railway and the existing railway embankment.

In January 2014, the PKC Community Greenspace team set up a project group comprised of Comrie groups and local landowners, and CCT to make this aspiration a reality.

When finished the new path will have an improved surface suitable for cycling and horse riding. It will:

- be part of the National Cycle Network, National Walking and Cycling Network
- be part of the Cross-Scotland Pilgrims' Way from St Andrews to Iona
- link to other community led multi-use paths already established between Comrie and St Fillans and eastwards via Lochearn and Killin and the developing multi-use path between Muthill and Crieff
- serve local communities providing a safe, level, off-road path for functional and recreational trips
- encourage tourism
- bring economic benefit to the area
- help to improve general health and wellbeing

Planning was approved in May 2023 and landowners are being pressed to enter into Path Agreements to allow construction of the project to commence.



Proposed CMRI/126 Path Improvement linking Crieff and Comrie

Funding and Feasibility

PKC Community Greenspace is managing the funding for the project supported by the following organisations:

- TACTRAN (2013/14 for initial landowner negotiations)
- Sustrans, SNH, Gannochy Trust (2014/15 Feasibility and Flooding Report and landowner negotiations)
- Sustrans (2018/19 (Detailed Flooding Report)
- CG/PKC (2021/22 preconstruction design) with Engineering design input from SWECO



Volunteer Paths Group

It doesn't take long for Crieff's local paths to become overgrown. Monthly path parties made up of volunteers supported by the local Countryside Ranger help to keep them in good shape for everyone to enjoy.

The Volunteer Paths Group activities started up again after being severely restricted due to COVID. The intention is to resume activities so that we can have a full annual schedule of monthly path parties.

The areas covered are all local to Crieff and include Kincardine Walk, Lady Mary's Walk, the paths at Bennybeg and over the whole of the Knock as well as The Hosh. Activities include clearing drainage channels, cutting back brambles, nettles and gorse and clearing paths.

The activities are fully supported by the Countryside Ranger who ensures all necessary tools such as strimmers, loppers, rakes and secateurs are provided.

Activities that were supported included:

October 2022	Kincardine Walk	clearing and cutting back shrubs encroaching on the path
December 2022	Lady Mary's Walk	clearing drainage channels
January 2023	The Knock	clearing and cutting back shrubs encroaching on the paths



Clearing the Kincardine Path, October 2022



Improving drainage along Lady Mary's Walk, December 2022



Clearing paths on the Knock, January 2023

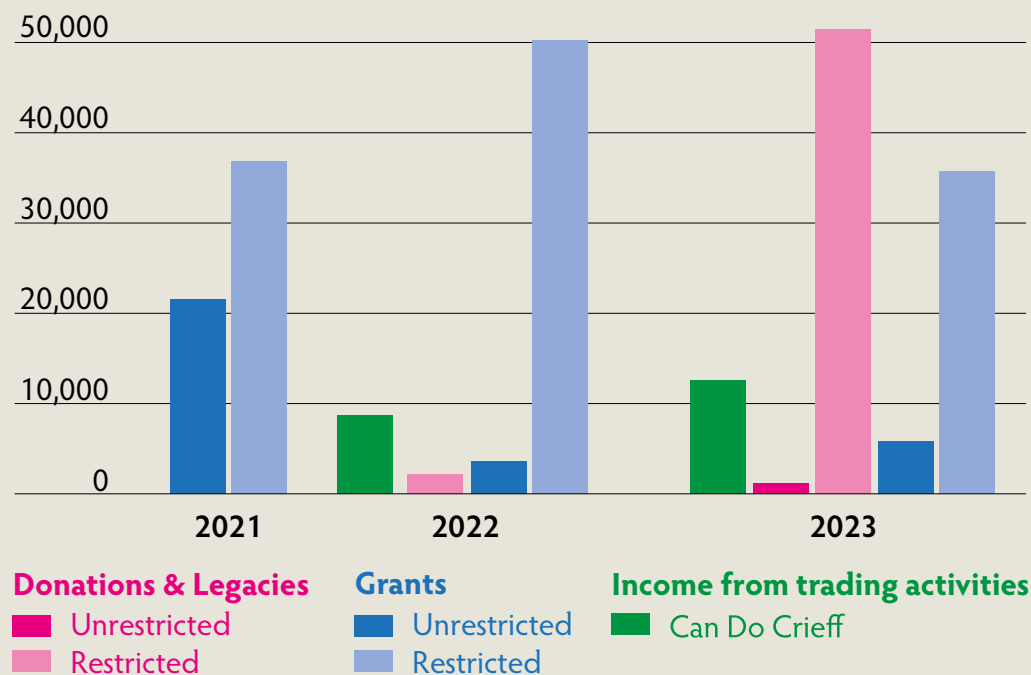
FINANCIAL REVIEW

Crieff Community Trust is now in its tenth year of operation. This financial year has seen the Trust begin to improve its financial base after the difficulties faced due to the Covid pandemic in the previous two years.

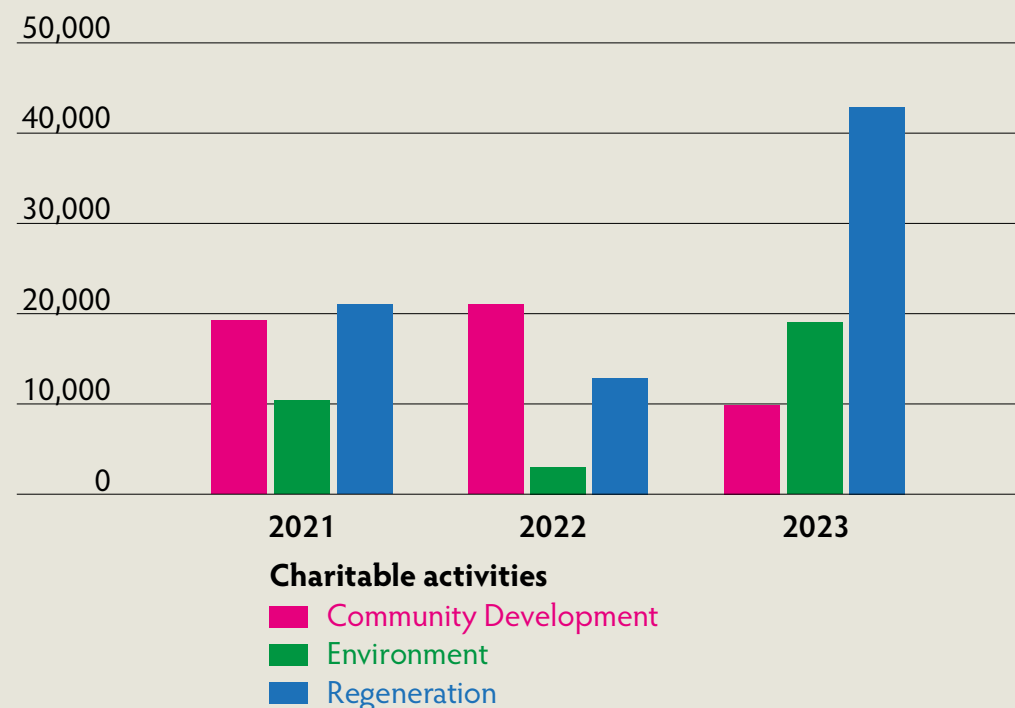
Our Can Do Crieff coworking space, the main source of revenue for the Trust, operated at a profit for the first year since opening in 2019. Can Do Crieff members paid £12,527 of fees over the year. After deducting the cost of rent (£10,800) and other costs associated with running the space (£440), Can Do Crieff generated over a thousand pounds of profit for the Trust's unrestricted funds. It is hoped that this revenue will continue to grow in the coming financial year.

A small amount of funds remained in the Investing in Communities Fund, which contributed, along with other funding, to the part-time salary of an independent project consultant to assist the Trust with the Drummond Arms regeneration project. Another part-time independent consultant was appointed as the Trust's CEO in December 2022, a key element to CCT's strategic management for sustainable success. This role was funded initially by the PKC Community Led Local Development Fund. Funding has been secured to continue this important role in 2023/24. The PKC CLLD also funded work in Turretbank Wood, to enable us to undertake necessary tree maintenance.

Total income



Total Charitable expenditure



**Consolidated Statement of Financial Activities
incorporating Income and Expenditure Account (extract)**
for the year ended 31 March 2023

	1 Apr 22 to 31 March 23			31 Mar 22
	Unrestricted funds £	Restricted income funds £	Total 2023 £	Total 2022 £
INCOME AND ENDOWMENTS				
Donations and legacies	5,500	87,297	92,797	54,758
Other trading activities	12,572	–	12,572	8,987
Total income	18,072	87,297	105,369	63,745
EXPENDITURE				
Raising funds	19	12	31	1,073
Charitable activities	12,679	72,229	84,908	52,902
Total expenditure	12,698	72,241	84,939	53,975
Net income/expenditure	5,374	15,056	20,430	9,770
Net movement in funds	4,934	15,496	20,430	9,770
Total funds brought forward	1,032	30,985	32,017	22,247
Total funds carried forward	5,966	46,481	52,447	32,017

Consolidated Balance Sheet (extract) as at 31 March 2023

FIXED ASSETS				
Tangible assets	502	–	502	1,031
Investment in Subsidiary (DARL)	–	1	1	1
Total fixed assets	502	1	503	1,032
CURRENT ASSETS				
Debtors	6,800	259	7,059	4,339
Cash at bank and in hand	5,658	46,222	51,880	32,497
Total current assets	12,458	46,481	58,939	36,836
CURRENT LIABILITIES				
Creditors: amount falling Due within one year	6,994	1	6,995	5,851
Net assets/(liabilities)	5,966	46,481	52,447	32,017
FUNDS OF THE CHARITY				
Unrestricted funds	5,966	–	5,966	1,032
Restricted income funds	–	46,481	46,481	30,985
Total Charity funds	5,966	46,481	52,447	32,017

This information is a summary of the Statement of Financial Activities and Balance Sheet derived from the financial statements prepared by Johnston Carmichael LLP which received an independent examination from Benham Conway & Co Chartered Accountants and were approved by the Board on 19 October 2023. CCT's full annual accounts are available at <https://www.crieffcommunitytrust.org.uk/about-us-2/annual-reports-and-accounts/>

LOOKING AHEAD

The next twelve months are going to be busy. Building on foundations created over the past ten years and CCT's current strategy, the Trust plans to progress its diverse range of projects and strengthening CCT itself by:

refurbishing James Square and the Murray Fountain



continuing to care for Turretbank Wood



fixing local paths



developing the Uniting Crieff framework

fundraising for the Crieff to Comrie path



implementing a new IT infrastructure for CCT



increasing Can Do Crieff's membership

fundraising for joining Lady Mary's Walk

creating an Events Calendar



creating a 'Crieff Fund'

progressing the regeneration of Drummond Arms

working on CCT's strategy

developing the Crieff Town Team

collaborating on CAP priorities



CRIEFFCOMMUNITYTRUST

How to get involved

There is a lot happening with Crieff Community Trust and many ways to get involved.

We are looking for team players with energy and initiative who have expertise or contacts in:
Communications, IT, Marketing, Governance, Finance, Fundraising, Project Management and Strategy.

If you or someone you know would like to help make things happen,
please email crieffcommunitytrust@gmail.com
or call David McCann on 07548 280965

www.crieffcommunitytrust.org.uk





THE CO-WORKING SPACE IN THE HEART OF CRIEFF WITH A DESK YOU CAN CALL YOUR OWN

THE SHARED PROFESSIONAL WORK SPACE – WHY TRAVEL FOR LESS?

Can Do Crieff offers:

- › superfast broadband
- › flexible, no contracts, from 'a desk for a day' to 24/7
- › clean, comfortable desks and a friendly, calm and professional atmosphere
- › in the centre of Crieff close to shops and cafés
- › competitive rates
- › meeting room time
- › communal kitchen
- › access to printing facilities
- › the opportunity to meet new people and not work in isolation



"An excellent co-working space with superfast wifi. Everything is easily accessible and you can use it 24/7. Management are excellent."



"I've been a member of Can Do Crieff for the past 3 years and can highly recommend it. A great space, great location, friendly atmosphere. Plenty of opportunities to meet with co-workers too."

Get in touch! Call us on 07548 280965

www.candocrieff.com

Lodge Street, Crieff PH7 4DW

(underneath Strathearn Arts)



Supported by Rural Perth & Kinross
LEADER Programme 2014 –2020
The European Agricultural Fund for
Rural Development – Europe investing in rural areas